

# SPALS SPEAKS

## Special points of interest:

- September 27 and 28th Conference in Baton Rouge Preview
- Regional News
- Deadlines for Grants, Scholarships, and Liz Borel Award

## SPEAKERS for 2012 CONFERENCE

He's BACK for 3 years running by popular request for a Full day session...STEVE GRIF-FIN . Joining him will likely be Dr. Wayne Secord, speaking about articulation, Susan Hall speaking about RTI, Jeff Simmons speaking

on Cochlear Implants, Dr. Jim Ball talking about Aspergers/ Autism, iSLP talking about technology, Sam Johnson speaking about applications of DIBELS data, Nancy Teilan talking about reading with TLC, Dr.

Carol Flexor speaking about Hearing Loss and amplification.



### iSLP Initiative "App of the Month"

#### Speech Tutor

Speech Tutor is a revolutionary app produced by PocketSLP that you can purchase for \$9.99. It offers a side view and front view of a transparent mouth for each sound production. It includes 132 animations and the sounds are listed in order of mastery.

It also has a "Basics" page, which is great when speaking with parents about how sounds are produced (voice, place, manner) and includes a labeled diagram of the articulators. Each sound comes with a text description including phonetic symbol, voice, place, manner, approximate age of emergence & mastery as well as notes and tips for production. A palate diagram is provided for the students to see where they should place their tongue. You can change the speed of production when listening to the sound as well as record yourself, your student or both producing the sound.

While recording, you will see an audio graph, which is another great tool for the students to tell if they are producing the sound correctly. Speech Tutor allows SLPs to do what we've never been able to do before... show students what's going on in our mouths as we produce sounds!

## Deadlines for Grants, Scholarships and Liz Borel Award

SPALS is offering 3 grants up to \$1000. The deadline for application is August 1, 2012.

SPALS is offering 2 Scholarships up to \$1500. The deadline is August 1, 2012

Liz Borel Award nominees are due by July 1, 2012

Please see Website and Feb. newsletter for more information. Do not let these valuable opportunities pass by.

Mail To:

SPALS

PO Box 12177

Lake Charles, LA 70612

## SPALS CONFERENCE HOTEL INFORMATION

The SPALS 2012 conference will be in Downtown Baton Rouge at the River Center on September 27 and 28th, 2012.

A block of rooms at The Belle of Baton Rouge Hotel will be held until



9/21/12 therefore register early.

Belle of Baton Rouge  
102 France Street  
Baton Rouge, LA  
70802

Room Rate \$119 a night plus 13% Tax per night. There will be an additional charge of \$10 per person per room per night over double occupancy. Guest are subject to \$3 luggage fee per re-

*What's in a word?*

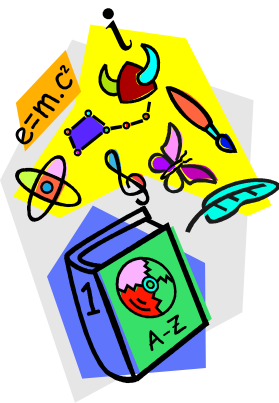
*By Monika Marcel*

*With the advent of Response to Intervention (RtI), the increased pressure of standardized "high-stakes" testing and the transition from the traditional therapy model to whole classroom intervention, the search is on for tools to build and expand language.*

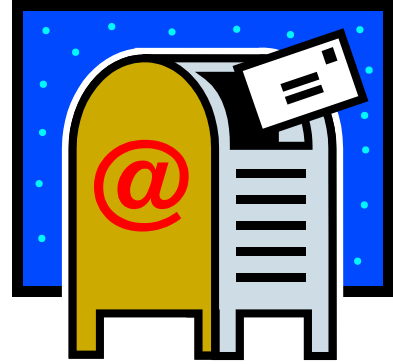
*In January, Larry Bell presented in Terrebonne Parish on the power of high expectations and the worth of educators. He detailed his UnRAAvel acronyms for reading comprehension, math problem solving and writing compositions. When he discussed*

*high stakes testing, he explained that there are twelve power words that are prevalent in all standardized tests that are NOT being taught in the classroom. Therefore our students are missing answers to questions, not because they don't know the answer but because they don't understand exactly what the questions are asking. Mr. Bell went on to describe his "100 percenters", teachers who used his methods with outstanding results. Instead of "at-risk" students, they had "at-*

*promise" students. These were students with a range of abilities, various backgrounds and socio-economic levels who learned successfully due to their teacher's high expectations, dedication and use of Larry Bell's strategies. An online search can give you more information regarding the 12 power words of Larry Bell and for classroom materials to build those test-taking skills in students, [www.larrybell.com](http://www.larrybell.com).*



SPALS  
PO Box 12177  
Lake Charles, LA 70612



## Website Resources on Behavior By Monika Marcel

*It seems Speech Therapists are being called upon more and more to work with children with not only speech and language concerns but other issues as well. Many of you may already be involved in writing behavior plans for students classified as "speech only" or you may be serving on your school's behavior support team.*

*It seems that the focus of services is shifting from the traditional model of therapy to the classroom. With an emphasis on inclusion and differentiated instruction, reading readiness and response to interventions, having free resources to share with other professionals, educators and parents is valuable. Our aim is to help children learn and grow with an awareness of the areas which need improvement, methods to improve them and acknowledging each child's individual strengths.*

*The following three websites were selected with the above goals in mind.*

*The first website is Dr. Laura Riffel's website, [www.behaviordoctor.org](http://www.behaviordoctor.org). It is packed full of practical, functional information. From plans on school wide positive behavior*

*support, tools for classroom management to incredibly helpful internet radio show archives with tips for helping children with Attention Deficit Disorder and Oppositional Defiant Disorder and even advice for parents dealing with sibling rivalry, it is all there. Dr. Riffel, with over thirty years of experience in almost every level of education, is extremely knowledgeable. She has free downloadable forms for assessment of behaviors and student/teacher rating scales in which children learn self-monitoring strategies. She explains the four functions of behavior in a common sense way with humor and describes real world issues with a variety of solutions and lists of low cost and even free rewards. Her strategies are researched-based and field-tested. If you are looking for proactive, positive methods to teach those students who may be hard to reach, please review [www.behaviordoctor.org](http://www.behaviordoctor.org). It is worth your time.*

*If you have students who have the ability but not the organizational skills needed to be academically successful, this 13 page guide to building routines, calendar use and time management may be beneficial. It is a free download from the creators of [www.flylady.net](http://www.flylady.net) and you can find it here:*

*[http://www.flylady.net/images/student\\_CJ.pdf](http://www.flylady.net/images/student_CJ.pdf)*

*If you are working with students who are on the Autism Spectrum, this website, along with Dr. Riffel's, is helpful for parents. Kim McVean is an Occupational Therapist. She is very skilled and knowledgeable about working with children with a variety of special needs. She has recently returned from a mission trip to Malawi, Africa to help disadvantaged children with special needs there. Along with providing parents information about resources and strategies for their children, she is also an advocate for parents, siblings and their needs.*

*If you have favorite websites that you visit for FREE tools, resources, inspiration or guidance, we'd like to hear about them. You can write to [monikamarcel@tpsd.org](mailto:monikamarcel@tpsd.org) to share.*